

EDAform Installation Guide

Table of Contents

1. Introduction.....	2
2. System Requirements.....	2
3. Installation Process.....	2
4. Running EDAform	6

Version: **1.7 (EDAform Version 3.7.0)**
Last Updated: **07 Mar 2011**

1. Introduction

This guide covers the EDAform installation process. By default, EDAform will be installed at C:\Program Files\Edaxf\ directory.

2. System Requirements

- Processor Speed - 1 GHz (minimum)
- RAM Size - 2 GB (minimum)
- Hard Disk Space - 100MB available space to store the software
- Operating System - Windows XP, Windows Vista, Windows 7
- Screen Resolution - 800X600 pixels (minimum) and at least 256 colors

3. Installation Process

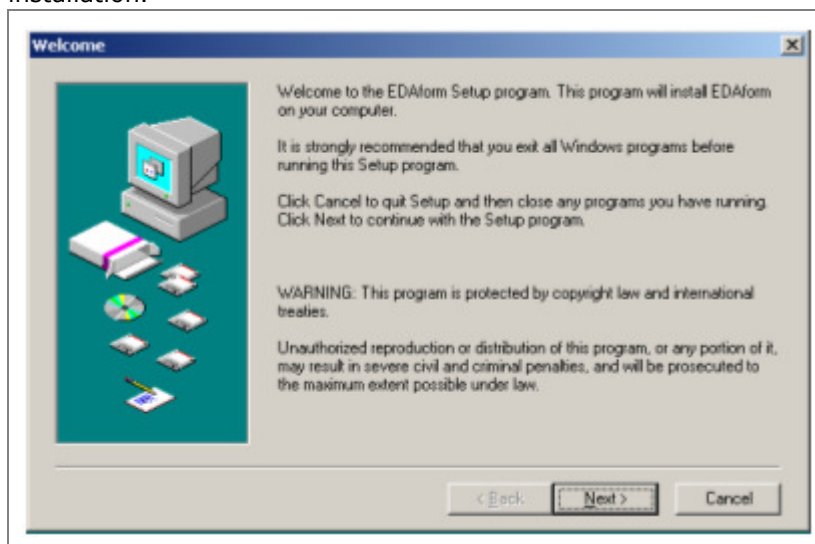
This section will guide you through the process of installing EDAform application and Java Runtime Environment 1.6. Java Runtime Environment is required to run the EDAform application.

For performance reasons, it is recommended that you exit from all other applications during installation.

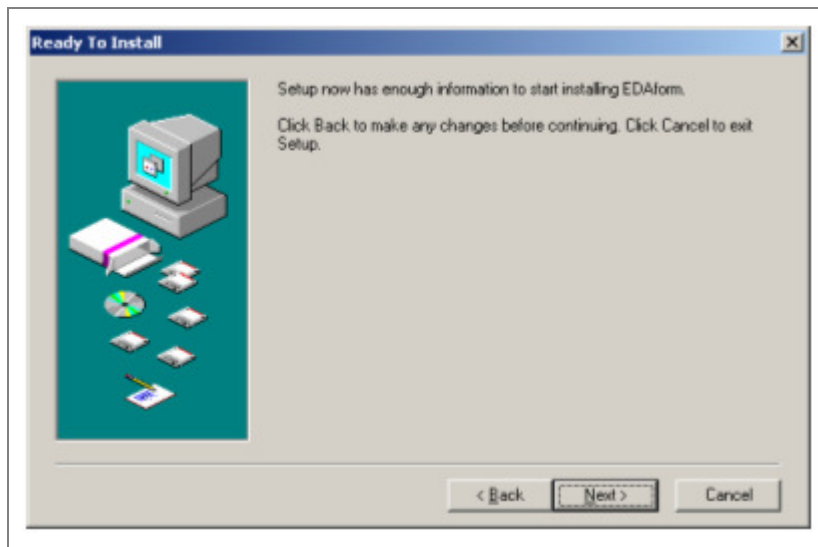
You must login using the local administrator account to do installation.

Step 1

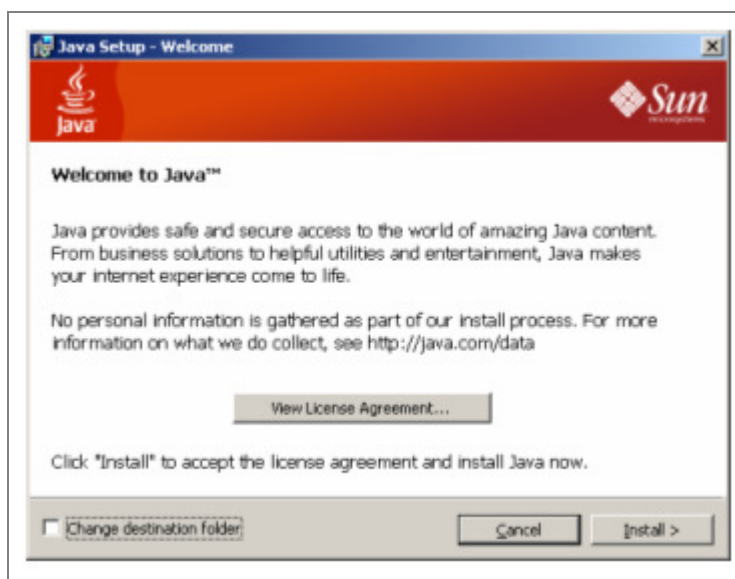
1. Download the setup program from <http://edanet.ura.gov.sg> website.
2. Locate the file **EDAform-Setup-3.7.0.exe** in the folder in your PC where you have downloaded the setup program and double click to execute it.
3. The EDAform Welcome window will be displayed. Click 'Next' to continue with the installation.



4. The Ready to Install window will appear

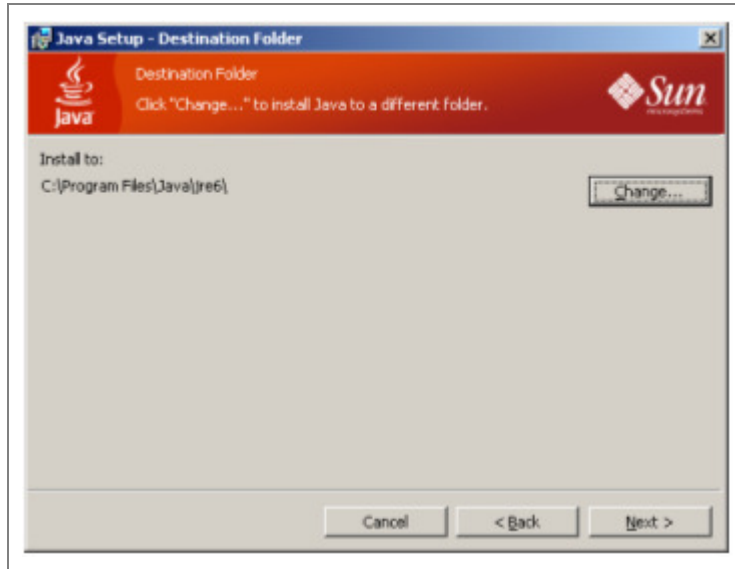


5. Now you are going to install Java Runtime Environment. Click on 'Install' button to proceed.



If you want to change the destination location, tick the 'change destination folder' (go to step 6). If no change, go to step 6 directly. We recommend not to change the destination location.

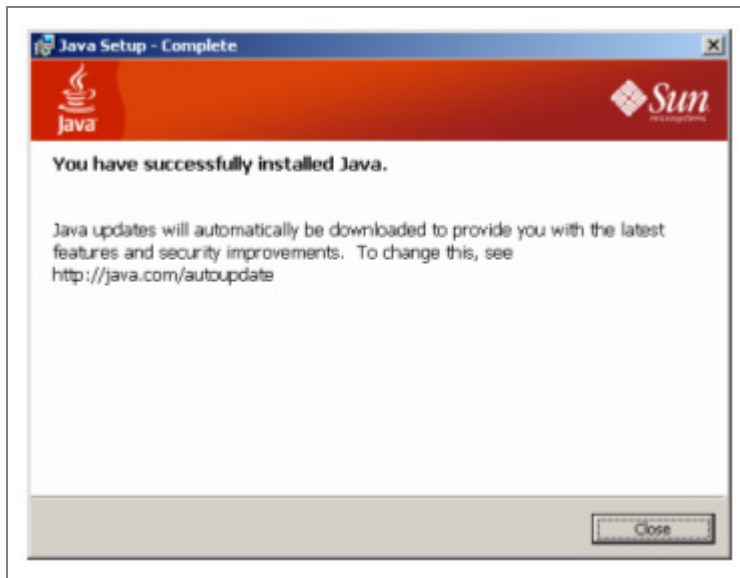
6. To change to another destination folder, click 'Change' button and select another destination folder. Click on 'Next' button to proceed.



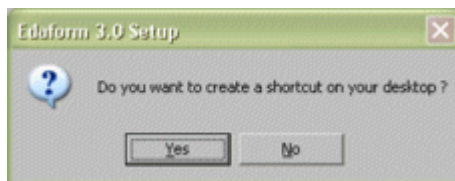
7. Wait for the installation to complete



8. Click 'Close' button.

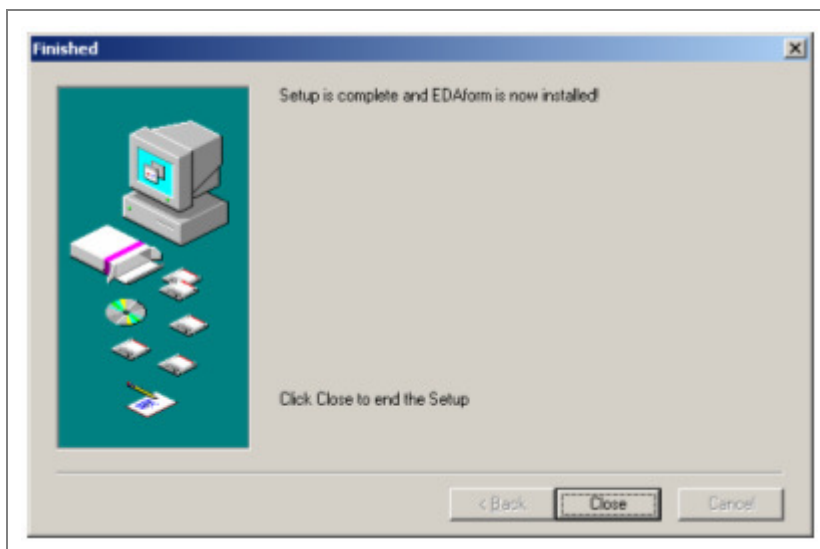


9. Setup will continue to install the rest of the files for EDAform. Once completed, you will be asked whether to create the shortcut on your desktop.



Note: if you don't create the shortcut, you have to access EDAform from the windows menu. See 'Running EDAform' section below.

10. Click 'Close' when you see the following screen.



4. Running EDAform

There are 2 ways of launching the EDAForm application:

1. Double click the EDAform icon found on the desktop.



Edaform

2. Go to Start -> (All) Programs -> EDAForm. Click on 'EDAForm'.